

Markt Update

Zinsen

3 Monate (LIBOR)	LC	Preis	in bp Mrz '17
EUR (Deutschland)	EUR	-0.36%	-1
CHF	CHF	-0.73%	-0
USD	USD	1.15%	9

10 Jahre	LC	Preis	Mrz '17
EUR (Deutschland)	EUR	0.33%	12
CHF	CHF	-0.11%	13
USD	USD	2.42%	5

Festverzinslich

EUR	LC	Preis	Monat Mrz '17
Bclays Euro Agg Gov*	EUR	246.8	-0.6%
Bclays Euro Corp BBB*	EUR	257.9	-0.2%

CHF	LC	Preis	Mrz '17
SBI Domestic Gov*	CHF	224.2	-1.3%
SBI Domestic BBB*	CHF	136.7	-0.2%

USD	LC	Preis	Mrz '17
Bclays US Agg Gov*	USD	1'852.6	0.0%
Bclays US Corp (BBB)*	USD	3'501.7	-0.2%

*Quelle: Morningstar

Year to Date (bp)

LC	EUR	CHF
	-2	
		-0
15		

LC	EUR	CHF
	13	
		14
-10		

Year to Date (Monatsende)

LC	EUR	CHF
-1.4%	-1.4%	-1.7%
0.5%	0.5%	0.2%

LC	EUR	CHF
-0.2%	0.1%	-0.2%
0.5%	0.8%	0.5%

LC	EUR	CHF
0.5%	-0.8%	-1.1%
1.5%	0.2%	-0.2%

Pro Jahr - Differenz in bp

2016	2015	2014	2013	2012	2011
-21	-19	-21	14	-116	35
3	-69	-9	1	-4	-12
39	36	1	-6	-28	28

2016	2015	2014	2013	2012	2011
-43	12	-136	59	-26	-140
-17	-39	-75	66	-25	-91
21	15	-72	134	-26	-142

Pro Jahr

2016	2015	2014	2013	2012	2011
3.1%	1.5%	12.4%	2.1%	10.5%	3.5%
5.3%	-0.7%	8.6%	4.2%	16.9%	-0.4%

2016	2015	2014	2013	2012	2011
2.1%	2.8%	9.2%	-4.3%	1.9%	8.9%
1.4%	1.2%	3.7%	2.0%	4.8%	2.8%

2016	2015	2014	2013	2012	2011
1.1%	1.2%	2.5%	-1.2%	1.7%	6.1%
8.0%	-2.3%	7.9%	-0.9%	11.1%	9.1%

Aktien

Global	LC	Preis	Monat Mrz '17
MSCI Welt ACWI	USD	875.1	1.3%
MSCI Welt	USD	7'328	1.1%
MSCI EM	USD	2'040.9	2.5%

Year to Date (Monatsende)

LC	EUR	CHF
7.0%	5.7%	5.4%
6.5%	5.2%	4.9%
11.5%	10.2%	9.8%

Pro Jahr

2016	2015	2014	2013	2012	2011
8.5%	-1.8%	4.7%	23.4%	16.8%	-6.9%
8.2%	-0.3%	5.5%	27.4%	16.5%	-5.0%
11.6%	-14.6%	-1.8%	-2.3%	18.6%	-18.2%

Europa	LC	Preis	Mrz '17
MSCI Europa	EUR	227.9	3.5%
DAX	EUR	12'313	4.0%
SMI	CHF	8'659	2.9%
FTSE 100	GBP	7'323	1.1%

LC	EUR	CHF
6.1%	6.1%	5.8%
7.2%	7.2%	6.9%
7.0%	7.3%	7.0%
3.7%	4.1%	3.7%

2016	2015	2014	2013	2012	2011
3.2%	8.8%	7.4%	20.5%	18.1%	-7.5%
6.9%	9.6%	2.7%	25.5%	29.1%	-14.7%
-3.4%	1.2%	12.9%	23.9%	19.1%	-4.6%
19.1%	-1.3%	0.7%	18.7%	10.0%	-2.2%

Americas	LC	Preis	Mrz '17
S&P 500	USD	2'363	0.1%

LC	EUR	CHF
6.1%	4.7%	4.4%

2016	2015	2014	2013	2012	2011
12.0%	1.4%	13.7%	32.4%	16.0%	2.1%

Asien	LC	Preis	Mrz '17
Nikkei 225	JPY	18'909	-0.4%

LC	EUR	CHF
-0.3%	3.3%	3.0%

2016	2015	2014	2013	2012	2011
2.4%	11.0%	9.0%	59.3%	25.6%	-15.6%

Sektoren (ACWI)	LC	Preis	Mrz '17
Zyklischer Konsum (CD)	USD	291	2.6%
Nichtzykl. Konsum (CS)	USD	356	1.1%
Energie	USD	353	0.4%
Finanzen	USD	197	0.2%
Gesundheit	USD	301	0.4%
Industrie	USD	323	1.5%
Technologie	USD	228	2.9%
Grundstoffe	USD	391	0.8%
Immobilien	USD	354	-0.2%
Telekom	USD	148	1.1%
Versorger	USD	251	1.8%

LC	EUR	CHF
7.9%	6.6%	6.3%
7.2%	5.9%	5.6%
-3.7%	-5.1%	-5.4%
5.6%	4.3%	3.9%
8.6%	7.3%	6.9%
7.4%	6.0%	5.7%
13.1%	11.8%	11.4%
7.8%	6.5%	6.1%
4.9%	3.6%	3.2%
2.4%	1.0%	0.7%
7.0%	5.7%	5.4%

2016	2015	2014	2013	2012	2011
3.4%	4.6%	3.9%	36.5%	24.0%	-4.8%
2.1%	5.7%	6.8%	19.1%	15.3%	8.5%
28.6%	-21.6%	-12.9%	14.3%	3.1%	-2.5%
13.1%	-5.1%	3.9%	22.7%	29.4%	-19.0%
-6.3%	6.8%	18.7%	36.5%	18.6%	9.6%
12.6%	-2.6%	0.7%	30.1%	16.8%	-9.8%
12.7%	3.6%	15.7%	27.1%	15.8%	-4.1%
24.2%	-15.8%	-7.1%	-0.3%	11.5%	-21.2%
3.2%	0.3%	13.5%	1.7%	31.5%	-8.4%
5.8%	-1.4%	-1.1%	24.5%	9.1%	0.5%
6.6%	-7.4%	14.7%	11.6%	3.4%	-3.7%

Alternative Anlagen

Rohstoffe	LC	Preis	Monat Mrz '17
Öl (Brent)	USD	53.5	-3.7%
Gold	USD	1'248	-0.0%

Year to Date (Monatsende)

USD	EUR	CHF
-5.8%	-7.1%	-7.5%
8.4%	7.1%	6.7%

Pro Jahr

2016	2015	2014	2013	2012	2011
52.4%	-35.0%	-48.3%	-0.3%	3.5%	13.3%
8.6%	-10.4%	-1.8%	-28.0%	6.8%	10.3%

Hedge Funds	LC	Preis	Mrz '17
Global HF	USD	1'223	0.0%

LC	EUR	CHF
1.7%	0.3%	-0.0%

2016	2015	2014	2013	2012	2011
2.5%	-3.6%	-0.6%	6.7%	3.5%	-8.9%

Währungen

	LC	Preis	Monat Mrz '17
EUR/USD	USD	1.066	0.9%
EUR/CHF	CHF	1.069	0.5%
EUR/JPY	JPY	118.7	-0.5%

Year to Date (Monatsende)

JPY	USD	CHF
	1.3%	
		-0.3%
-3.6%		

Pro Jahr

2016	2015	2014	2013	2012	2011
-3.1%	-10.2%	-12.0%	4.3%	1.8%	-3.2%
-1.4%	-9.6%	-2.0%	1.7%	-0.8%	-2.4%
-5.7%	-9.8%	-0.1%	26.8%	14.8%	-8.1%

Daten per Ende März 2017

Performance in Total Return

Quelle: Moringstar, Six Telekurs

Markt Update - Details

Zinsen

Auf Ende Monat

3 Monate (LIBOR)	3 Mon	6 Mon	1 Jahr
EUR (Deutschland)	-2	-4	-11
CHF	-0	2	-0
USD	15	30	52

10 Jahre

3 Mon	6 Mon	1 Jahr
13	44	17
14	55	30
-10	91	61

Festverzinslich

Auf Ende Monat

EUR	3Mo	6Mo	1 Jahr
Bclays Euro Agg Gov*	-1.4%	-4.2%	-1.4%
Bclays Euro Corp BBB*	0.5%	-0.5%	3.2%

CHF	3Mo	6Mo	1 Jahr
SBI Domestic Gov*	-0.2%	-4.4%	-1.9%
SBI Domestic BBB*	0.5%	-0.8%	1.7%

USD	3Mo	6Mo	1 Jahr
Bclays US Agg Gov*	0.5%	-1.6%	-0.6%
Bclays US Corp (BBB)*	1.5%	-1.0%	5.3%

Aktien

Auf Ende Monat

Global	3 Mon	6 Mon	1 Jahr
MSCI Welt ACWI	6.9%	8.2%	14.8%
MSCI Welt	6.4%	8.4%	14.6%
MSCI EM	11.1%	7.0%	16.9%

Europa	3 Mon	6 Mon	1 Jahr
MSCI Europa	6.0%	12.2%	16.8%
DAX	7.1%	16.2%	22.0%
SMI	6.9%	8.0%	14.5%
FTSE 100	3.6%	8.0%	21.4%

Americas	3 Mon	6 Mon	1 Jahr
S&P 500	6.0%	9.8%	16.1%

Asien	3 Mon	6 Mon	1 Jahr
Nikkei 225	-0.3%	15.3%	15.1%

Aktien Sektoren

Auf Ende Monat

MSCI ACWI	3 Mon	6 Mon	1 Jahr
Zyklischer Konsum (CD)	7.7%	8.7%	11.6%
Nichtzykl. Konsum (CS)	7.1%	1.3%	4.8%
Energie	-3.8%	3.7%	15.9%
Finanzwesen	5.5%	17.4%	23.4%
Gesundheit	8.4%	3.1%	9.1%
Industrie	7.2%	9.0%	15.7%
IT	12.6%	11.8%	23.5%
Grundstoffe	7.8%	10.9%	24.3%
Immobilien	4.9%	-1.3%	3.8%
Telekom	2.4%	0.4%	1.6%
Versorger	6.9%	3.8%	5.4%

Alternative Anl.

Auf Ende Monat

Rohstoffe	3 Mon	6 Mon	1 Jahr
Öl (Brent)	-5.9%	7.4%	34.3%
Gold	8.2%	-4.8%	2.6%

Hedge Funds	3 Mon	6 Mon	1 Jahr
Global HF	1.7%	2.8%	6.0%

Währungen

Auf Ende Monat

	3 Mon	6 Mon	1 Jahr
EUR/USD	1.4%	-5.1%	-6.3%
EUR/CHF	-0.3%	-2.2%	-2.3%
EUR/JPY	-3.7%	4.3%	-7.0%

Daten per Ende März 2017

in bp

Mrz'17	Feb'17	Jan'17	Dez'16	Nov'16	Okt'16	Sep'16	Aug'16	Jul'16	Jun'16	Mai'16	Apr'16
-1	-1	-1	-1	-0	0	0	-2	-1	-1	-1	-2
-0	0	0	2	-2	2	-1	1	3	-4	-1	-0
9	3	4	6	5	3	1	8	11	-3	5	1

Mrz'17	Feb'17	Jan'17	Dez'16	Nov'16	Okt'16	Sep'16	Aug'16	Jul'16	Jun'16	Mai'16	Apr'16
12	-17	18	-8	11	28	-4	11	-13	-19	-14	13
13	-10	11	-6	22	25	-12	7	4	-26	-8	9
5	-8	-6	10	58	33	0	2	-1	-36	6	-1

Monat

Mrz'17	Feb'17	Jan'17	Dez'16	Nov'16	Okt'16	Sep'16	Aug'16	Jul'16	Jun'16	Mai'16	Apr'16
-0.6%	1.1%	-1.9%	0.6%	-1.5%	-2.0%	0.2%	-0.3%	0.8%	2.1%	1.0%	-1.0%
-0.2%	1.2%	-0.5%	0.8%	-1.3%	-0.6%	-0.2%	0.3%	1.9%	0.9%	0.3%	0.5%

Mrz'17	Feb'17	Jan'17	Dez'16	Nov'16	Okt'16	Sep'16	Aug'16	Jul'16	Jun'16	Mai'16	Apr'16
-1.3%	1.7%	-0.6%	-0.0%	-2.5%	-1.6%	0.5%	-0.8%	-0.1%	3.0%	0.6%	-0.7%
-0.2%	0.7%	-0.0%	0.1%	-0.8%	-0.6%	0.3%	0.4%	0.3%	0.8%	0.5%	0.2%

Mrz'17	Feb'17	Jan'17	Dez'16	Nov'16	Okt'16	Sep'16	Aug'16	Jul'16	Jun'16	Mai'16	Apr'16
0.0%	0.3%	0.2%	-0.0%	-1.7%	-0.5%	0.2%	-0.4%	0.0%	1.4%	-0.1%	-0.0%
-0.2%	1.2%	0.5%	0.8%	-2.7%	-0.6%	-0.1%	0.4%	1.7%	2.4%	-0.1%	1.9%

Monat

Mrz'17	Feb'17	Jan'17	Dez'16	Nov'16	Okt'16	Sep'16	Aug'16	Jul'16	Jun'16	Mai'16	Apr'16
1.3%	2.8%	2.8%	2.2%	0.8%	-1.7%	0.7%	0.4%	4.3%	-0.6%	0.2%	1.5%
1.1%	2.8%	2.4%	2.4%	1.5%	-1.9%	0.6%	0.1%	4.3%	-1.1%	0.7%	1.6%
2.5%	3.1%	5.5%	0.3%	-4.6%	0.2%	1.3%	2.5%	5.1%	4.1%	-3.7%	0.6%

Mrz'17	Feb'17	Jan'17	Dez'16	Nov'16	Okt'16	Sep'16	Aug'16	Jul'16	Jun'16	Mai'16	Apr'16
3.5%	2.9%	-0.4%	5.9%	1.1%	-0.8%	-0.0%	0.7%	3.5%	-4.2%	2.5%	2.1%
4.0%	2.6%	0.5%	7.9%	-0.2%	1.5%	-0.8%	2.5%	6.8%	-5.7%	2.2%	0.7%
2.9%	3.1%	0.9%	4.4%	0.6%	-3.8%	-0.7%	0.9%	1.5%	-2.4%	3.7%	3.5%
1.1%	3.1%	-0.6%	5.4%	-2.0%	1.0%	1.8%	1.7%	3.4%	4.7%	0.3%	1.4%

Mrz'17	Feb'17	Jan'17	Dez'16	Nov'16	Okt'16	Sep'16	Aug'16	Jul'16	Jun'16	Mai'16	Apr'16
0.1%	4.0%	1.9%	2.0%	3.7%	-1.8%	0.0%	0.1%	3.7%	0.3%	1.8%	0.4%

Mrz'17	Feb'17	Jan'17	Dez'16	Nov'16	Okt'16	Sep'16	Aug'16	Jul'16	Jun'16	Mai'16	Apr'16
-0.4%	0.5%	-0.4%	4.5%	5.1%	5.9%	-1.9%	2.0%	6.4%	-9.5%	3.4%	-0.6%

Monat

Mrz'17	Feb'17	Jan'17	Dez'16	Nov'16	Okt'16	Sep'16	Aug'16	Jul'16	Jun'16	Mai'16	Apr'16
2.6%	1.6%	3.5%	1.3%	1.1%	-1.4%	0.4%	-0.2%	6.4%	-3.1%	-0.5%	0.0%
1.1%	4.3%	1.8%	2.8%	-5.3%	-3.3%	0.2%	-0.8%	0.3%	3.5%	0.3%	0.0%
0.4%	-1.9%	-2.3%	3.8%	4.7%	-1.1%	3.0%	0.9%	-1.5%	4.3%	-2.8%	8.2%
0.2%	2.8%	2.5%	3.6%	6.1%	2.3%	-0.9%	3.4%	4.9%	-4.5%	-0.0%	3.2%
0.4%	5.8%	2.2%	1.5%	-0.0%	-6.8%	-0.1%	-4.0%	4.6%	0.9%	1.4%	3.2%
1.5%	2.9%	2.8%	0.8%	3.1%	-2.1%	0.5%	1.2%	4.5%	-0.7%	-0.8%	2.0%
2.9%	4.4%	5.2%	1.0%	-1.1%	-0.7%	2.8%	2.5%	7.9%	-1.7%	4.4%	-4.1%
0.8%	-0.4%	7.3%	1.4%	1.9%	-0.2%	1.8%	0.7%	7.1%	0.7%	-4.7%	7.8%
-0.2%	3.9%	1.2%	2.0%	-3.3%	-4.8%	-0.4%	-2.5%	4.3%	3.9%	-0.3%	0.1%
1.1%	-0.0%	1.3%	5.0%	-3.2%	-3.9%	-0.4%	-2.8%	1.7%	3.1%	-0.5%	0.1%
1.8%	4.1%	1.1%	4.0%	-6.2%	-0.9%	0.6%	-4.5%	1.0%	5.3%	-0.4%	-0.4%

Monat

Mrz'17	Feb'17	Jan'17	Dez'16	Nov'16	Okt'16	Sep'16	Aug'16	Jul'16	Jun'16	Mai'16	Apr'16
-3.7%	-0.2%	-2.0%	12.6%	4.5%	-3.8%	6.7%	8.1%	-12.4%	-0.0%	4.9%	19.6%
-0.0%	3.1%	5.1%	-1.5%	-8.0%	-3.5%	0.6%	-3.1%	2.2%	8.8%	-6.1%	5.0%

Mrz'17	Feb'17	Jan'17	Dez'16	Nov'16	Okt'16	Sep'16	Aug'16	Jul'16	Jun'16	Mai'16	Apr'16
0.0%	1.1%	0.5%	0.9%	0.9%	-0.6%	0.6%	0.2%	1.5%	0.2%	0.5%	0.4%

Monat

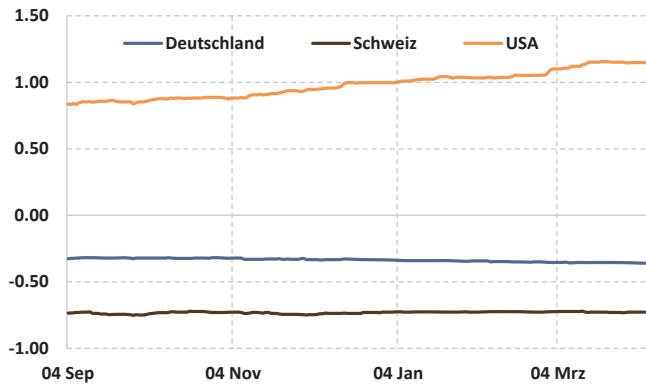
Mrz'17	Feb'17	Jan'17	Dez'16	Nov'16	Okt'16	Sep'16	Aug'16	Jul'16	Jun'16	Mai'16	Apr'16
0.9%	-2.1%	2.6%	-0.7%	-3.4%	-2.4%	0.7%	-0.1%	0.7%	-0.3%	-2.8%	0.6%
0.5%	-0.4%	-0.4%	-0.5%	-0.8%	-0.6%	1.3%	-0.0%	-0.0%	-2.1%	0.7%	0.4%
-0.5%	-1.9%	-1.2%	1.7%	5.3%	1.0%	-1.2%	1.0%	-0.4%	-7.0%	1.2%	-5.0%

Performance in Total Return

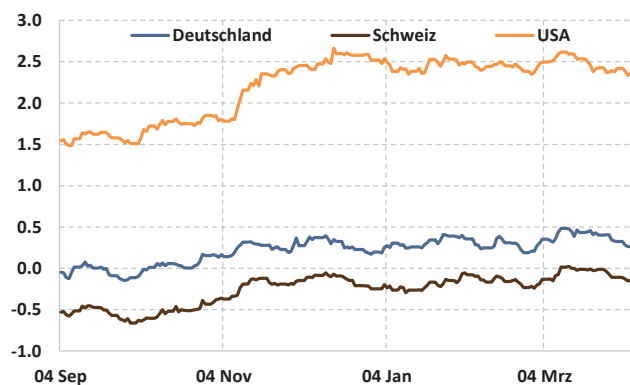
Quelle: Moringstar, Six Telekurs

Grafiken Festverzinslich

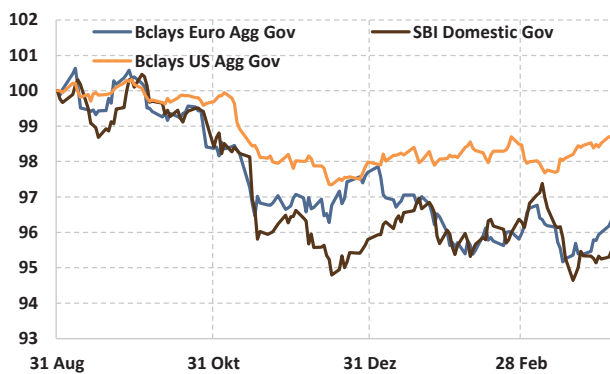
Zinsen: 3 Monate
Täglich, 6 Monate



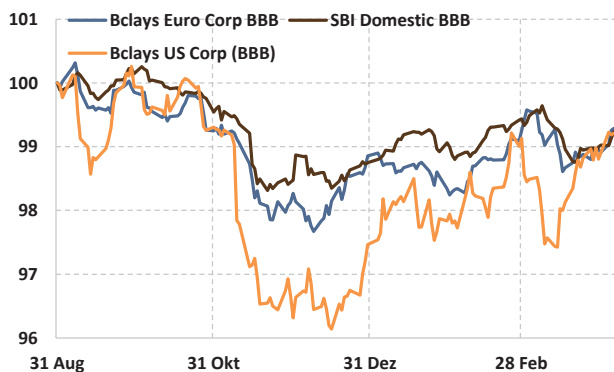
Zinsen: 10 Jahre
Täglich, 6 Monate



Festverzinslich: Staatsanleihen (Indexiert auf 100)
Täglich, 6 Monate

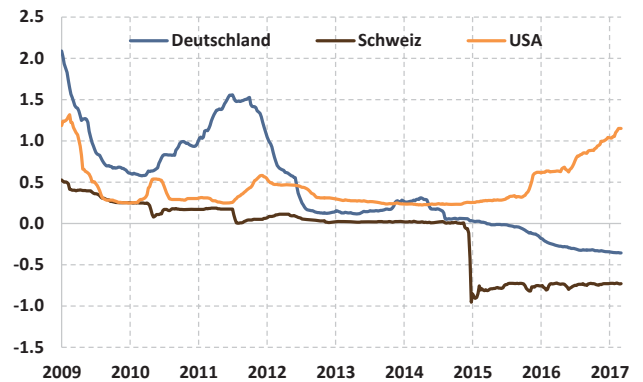


Festverzinslich: Unternehmensanleihen (Indexiert auf 100)
Täglich, 6 Monate

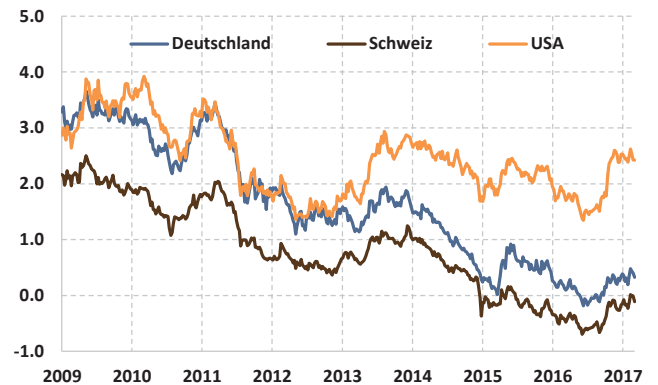


Daten per: 06.04.2017

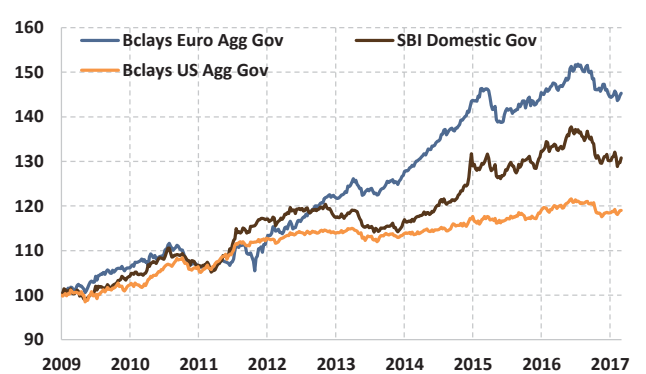
Zinsen: 3 Monate
Wöchentlich, seit Januar 2009



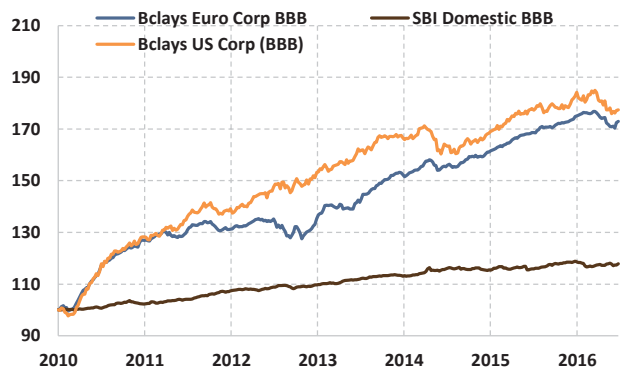
Zinsen: 10 Jahre
Wöchentlich, seit Januar 2009



Festverzinslich: Staatsanleihen (Indexiert auf 100)
Wöchentlich, seit Januar 2009



Festverzinslich: Unternehmensanleihen (Indexiert auf 100)
Wöchentlich, seit Januar 2009

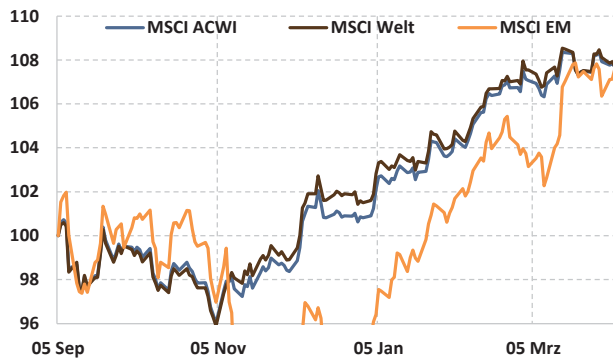


Quelle: SIX Telekurs, Moringstar, Colin&Cie.

Grafiken Aktien

Aktien: MSCI Welt ACWI

Täglich, 6 Monate



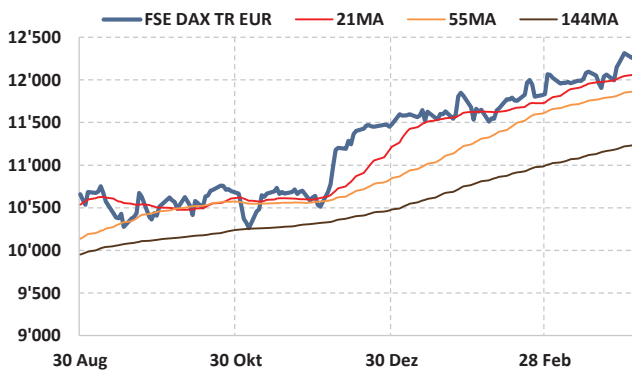
Aktien: MSCI Welt ACWI

Wöchentlich, seit Januar 2009



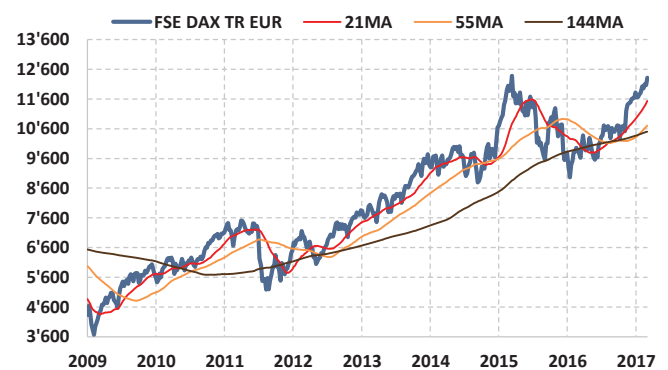
Aktien: DAX

Täglich, 6 Monate



Aktien: DAX

Wöchentlich, seit Januar 2009



Aktien: SMI

Täglich, 6 Monate



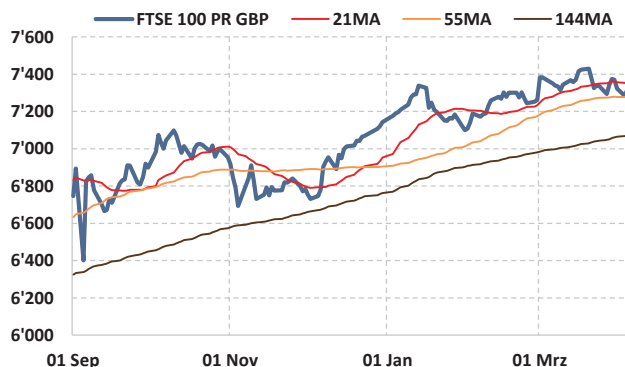
Aktien: SMI

Wöchentlich, seit Januar 2009



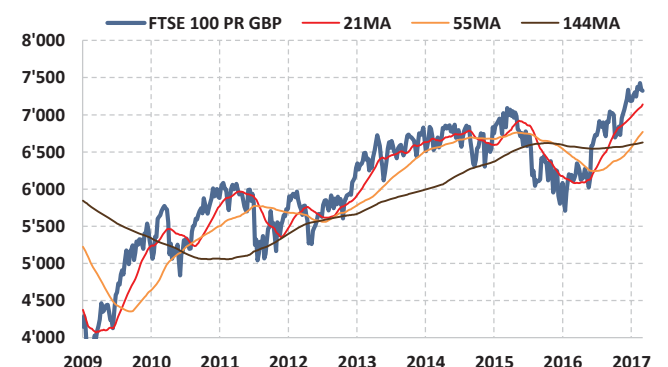
Aktien: FTSE 100

Täglich, 6 Monate



Aktien: FTSE 100

Wöchentlich, seit Januar 2009



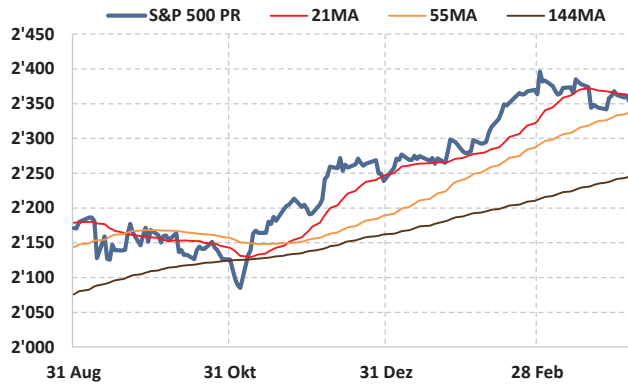
Daten per: 06.04.2017

Quelle: SIX Telekurs, Moringstar, Colin&Cie.

Grafiken Aktien (Fortsetzung)

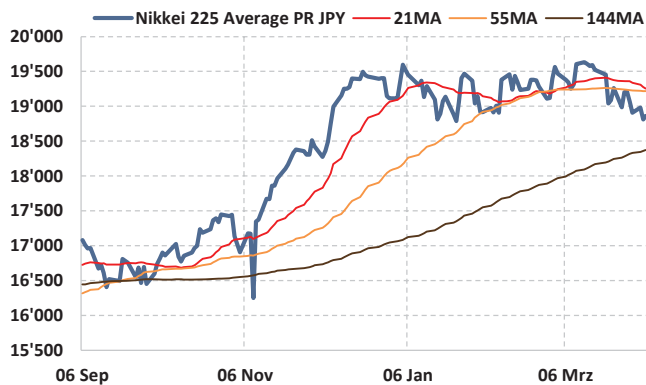
Aktien: S&P 500

Täglich, 6 Monate



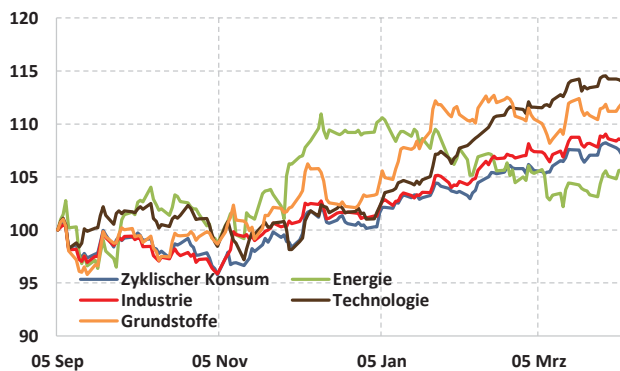
Aktien: Nikkei 225

Täglich, 6 Monate



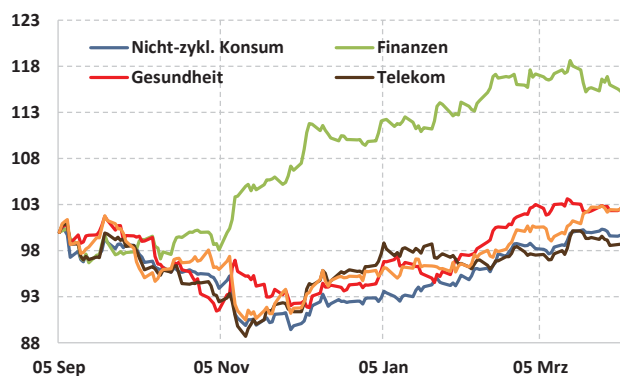
Sektoren: Zyklisch (MSCI ACWI; Indexiert auf 100)

Täglich, 6 Monate



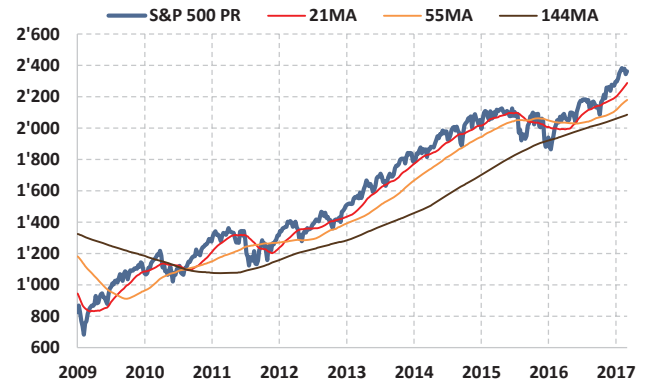
Sektoren: Defensiv und Finanzen (MSCI ACWI; Indexiert auf 100)

Täglich, 6 Monate



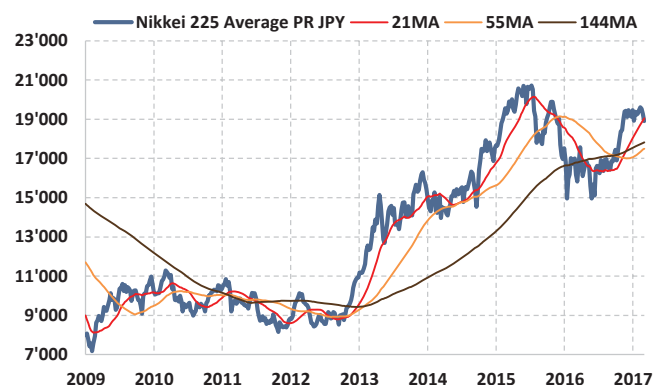
Aktien: S&P 500

Wöchentlich, seit Januar 2009



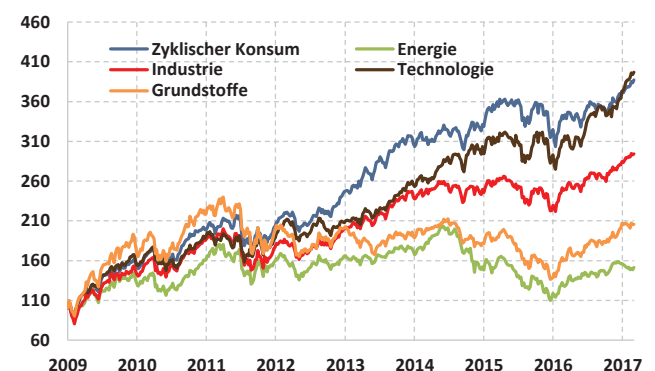
Aktien: Nikkei 225

Wöchentlich, seit Januar 2009



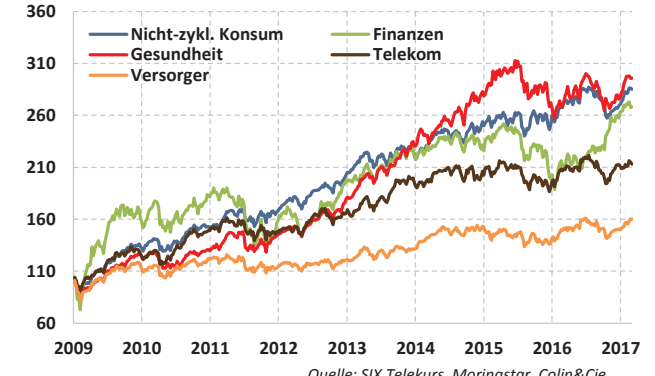
Sektoren: Zyklisch (MSCI ACWI; Indexiert auf 100)

Wöchentlich, seit Januar 2009



Sektoren: Defensiv und Finanzen (MSCI ACWI; Indexiert auf 100)

Wöchentlich, seit Januar 2009



Quelle: SIX Telekurs, Morningstar, Colin&Cie.

Grafiken Alternative Anlagen

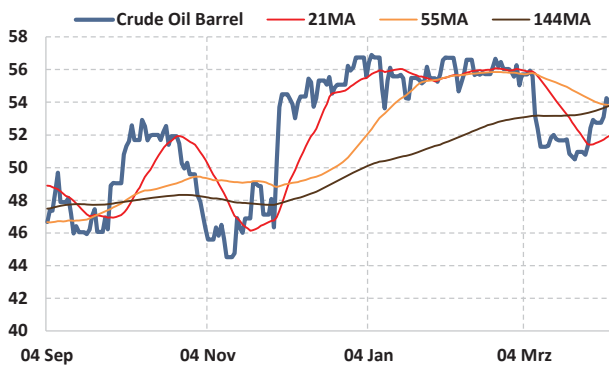
Alternative Anlagen: Gold

Täglich, 6 Monate



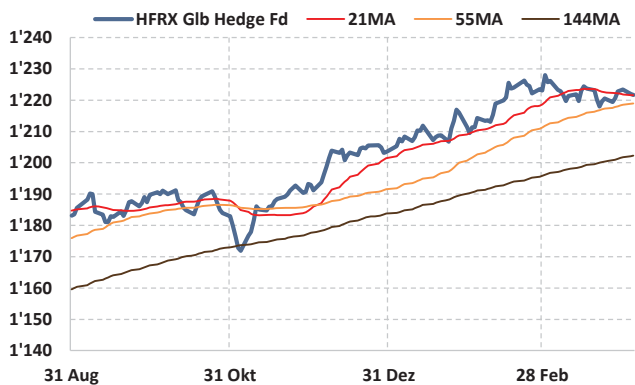
Alternative Anlagen: Öl (Brent)

Täglich, 6 Monate



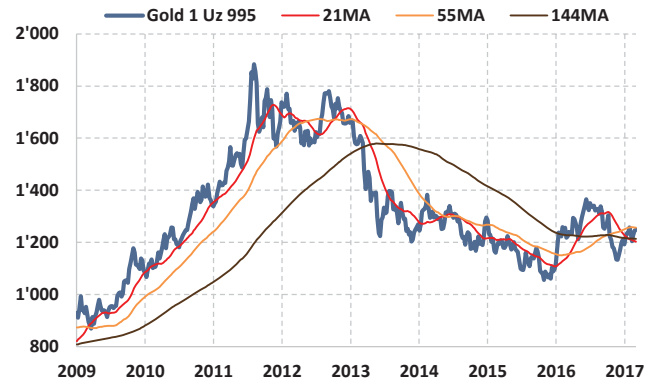
Alternative Anlagen: Hedge Funds

Täglich, 6 Monate



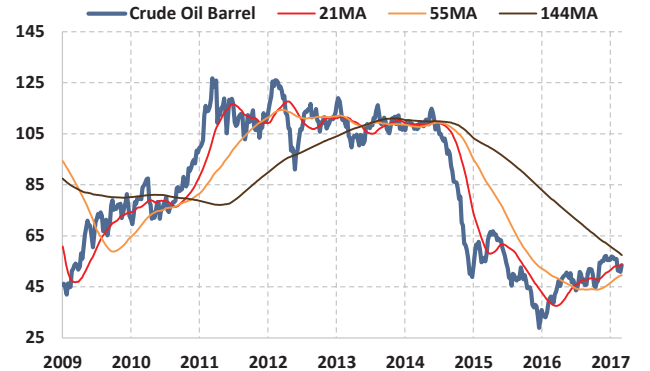
Alternative Anlagen: Gold

Wöchentlich, seit Januar 2009



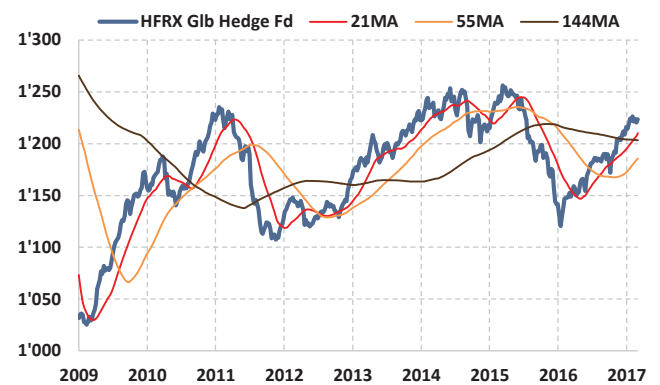
Alternative Anlagen: Öl (Brent)

Wöchentlich, seit Januar 2009



Alternative Anlagen: Hedge Funds

Wöchentlich, seit Januar 2009



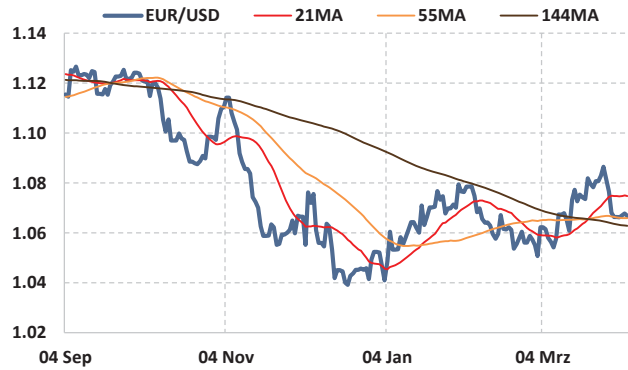
Quelle: SIX Telekurs, Moringstar, Colin&Cie.

Daten per: 06.04.2017

Grafiken Währungen

Währungen: EUR/USD

Täglich, 6 Monate



Währungen: EUR/USD

Wöchentlich, seit Januar 2009



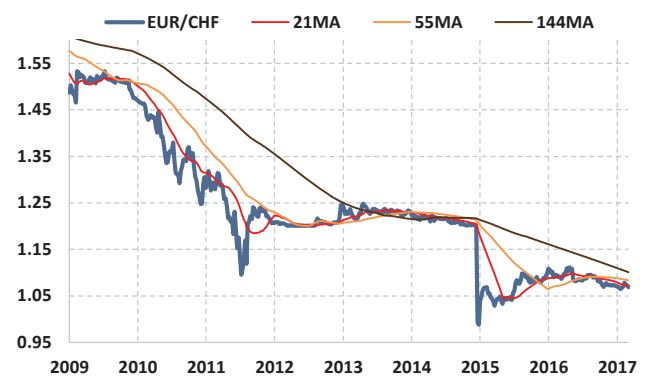
Währungen: EUR/CHF

Täglich, 6 Monate



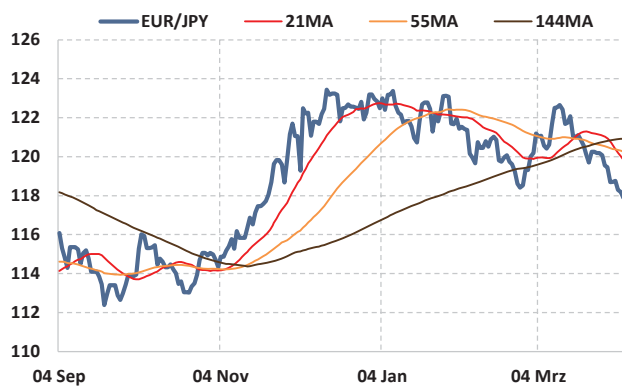
Währungen: EUR/CHF

Wöchentlich, seit Januar 2009



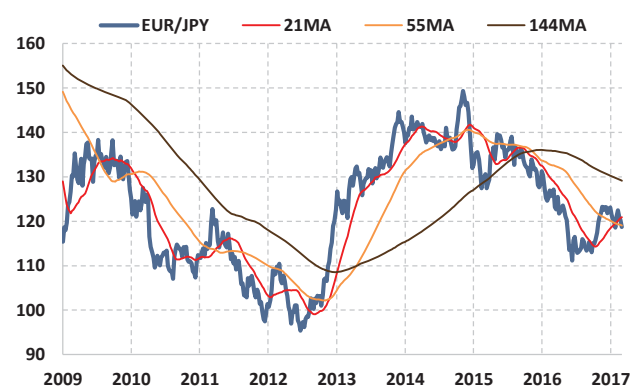
Währungen: EUR/JPY

Täglich, 6 Monate



Währungen: EUR/JPY

Wöchentlich, seit Januar 2009



Daten per: 06.04.2017

Quelle: SIX Telekurs, Moringstar, Colin&Cie.